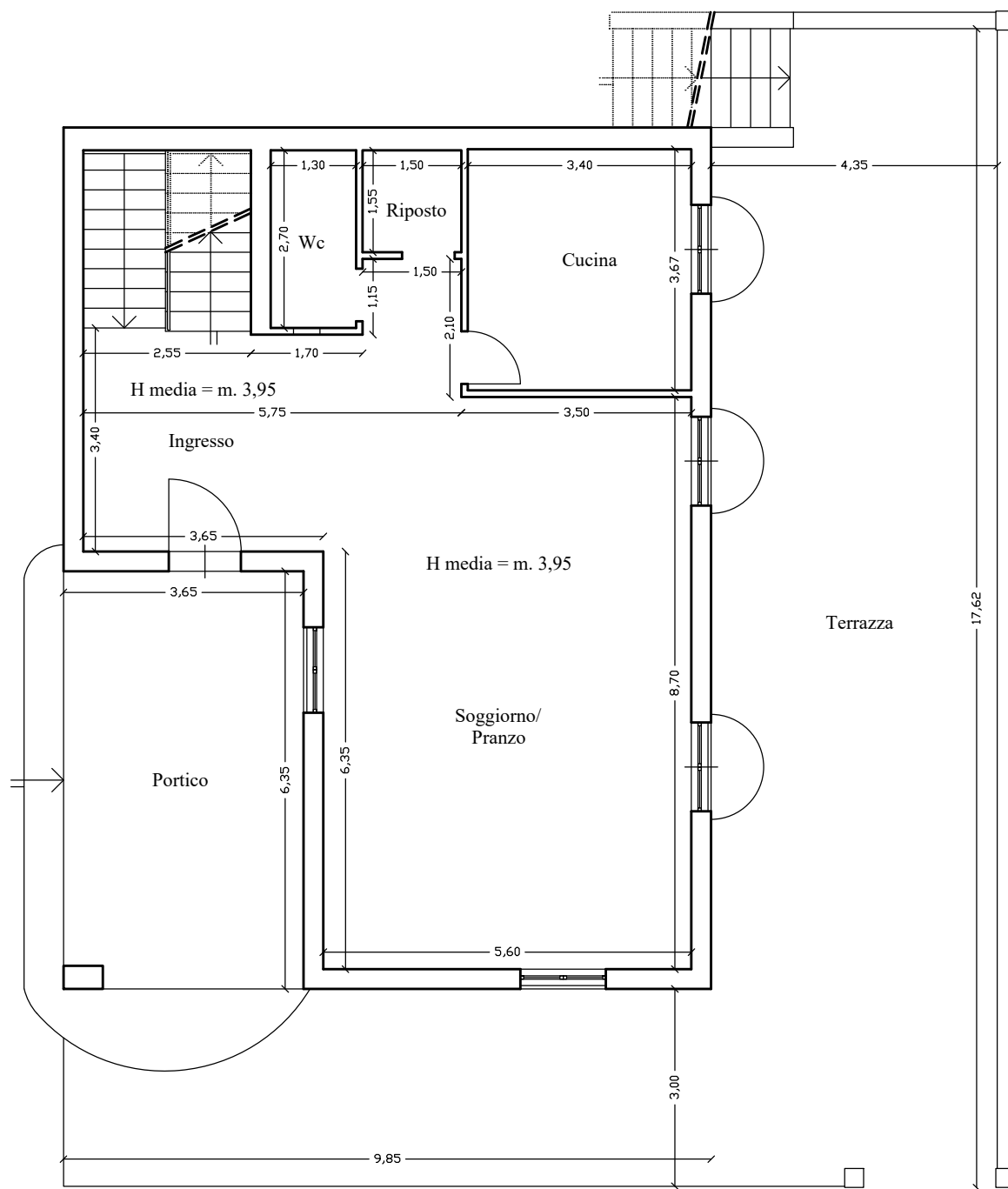


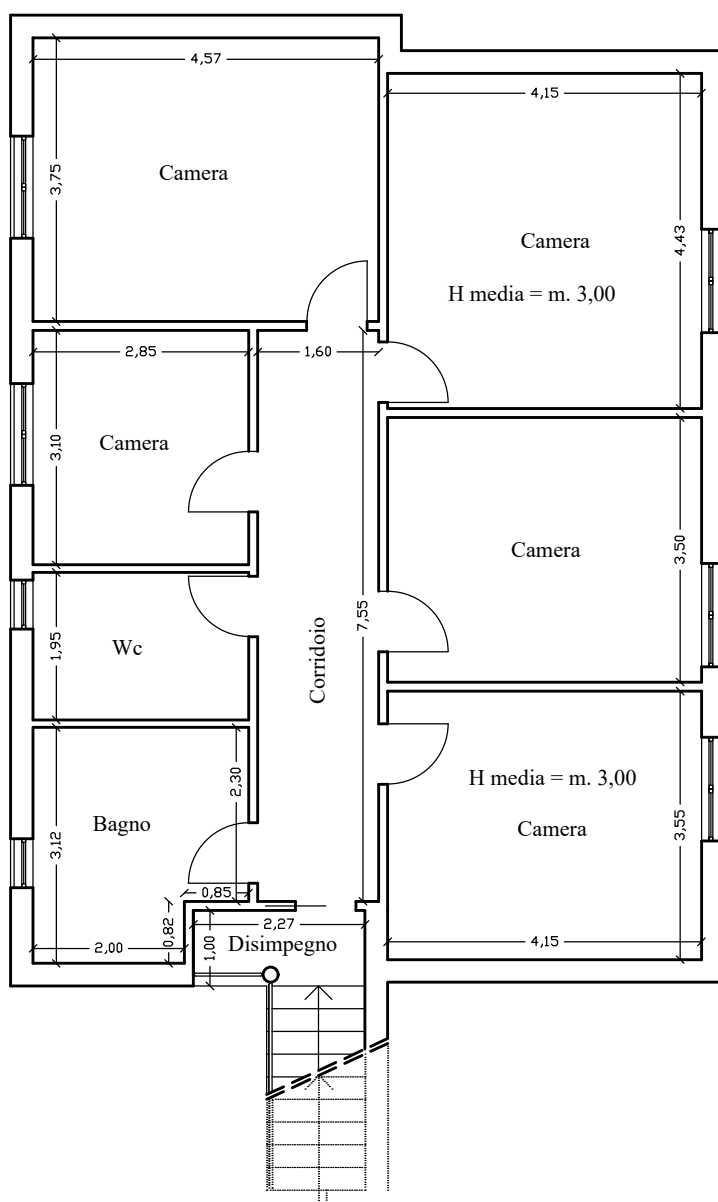


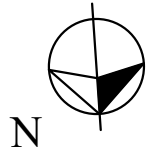
Superficie utile netta abitabile = mq. 83,15
 Superficie lorda coperta = mq. 105,85
 Superficie lorda coperta esterna (Portico) = mq. 23,20
 Superficie lorda scoperta esterna (Terrazza) = mq. 115,00



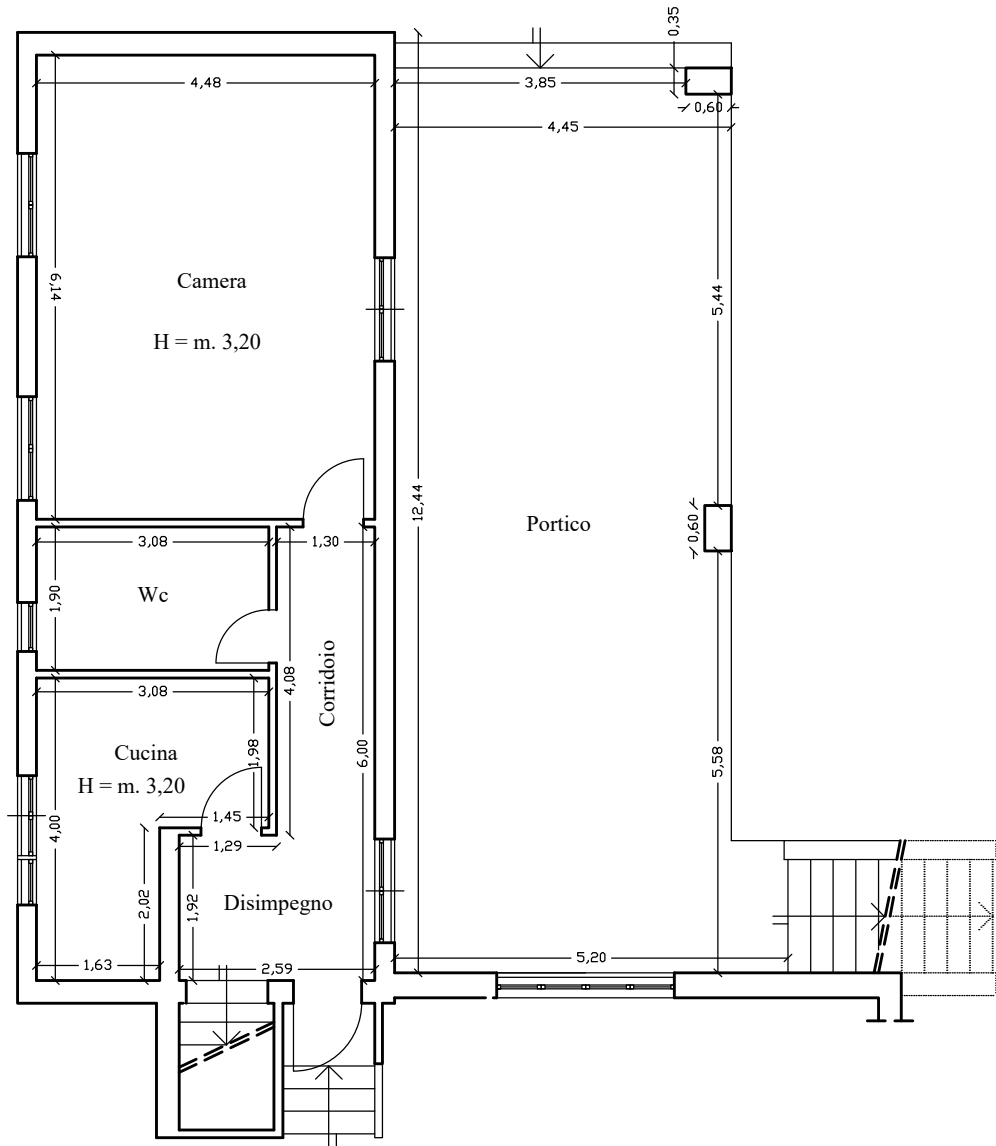


Superficie utile netta abitabile = mq. 102,50
 Superficie lorda coperta = mq. 119,00



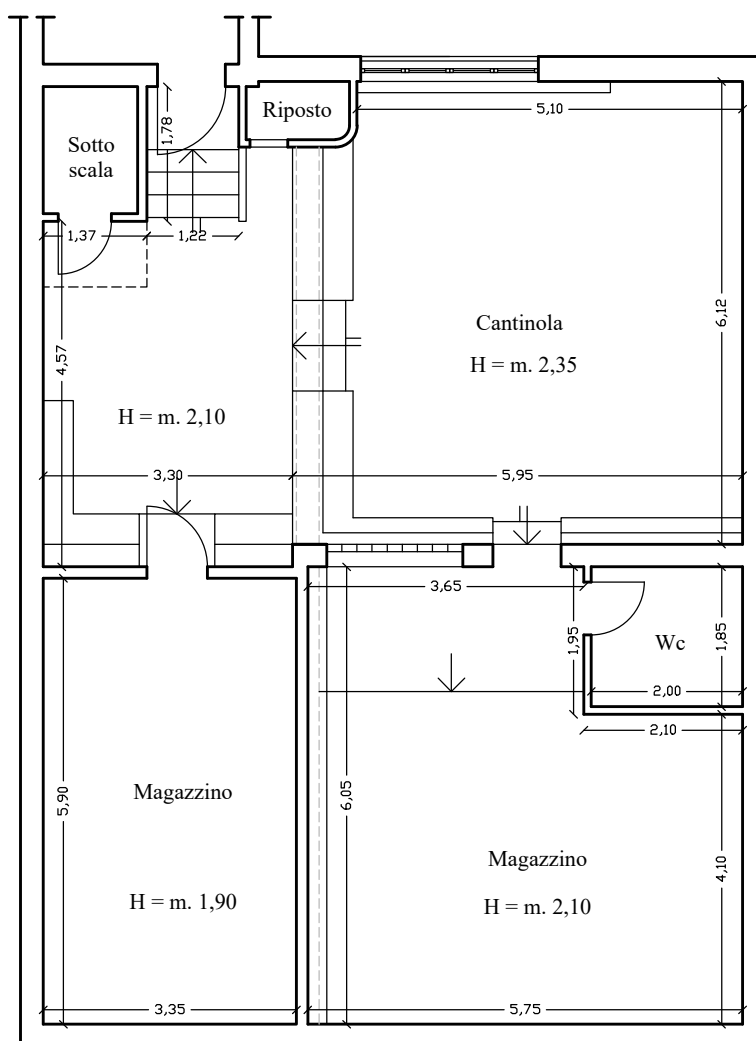


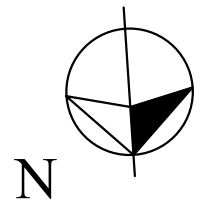
Superficie utile netta abitabile = mq. 53,20
 Superficie lorda coperta = mq. 64,10
 Superficie lorda coperta esterna (Portico) = mq. 53,25



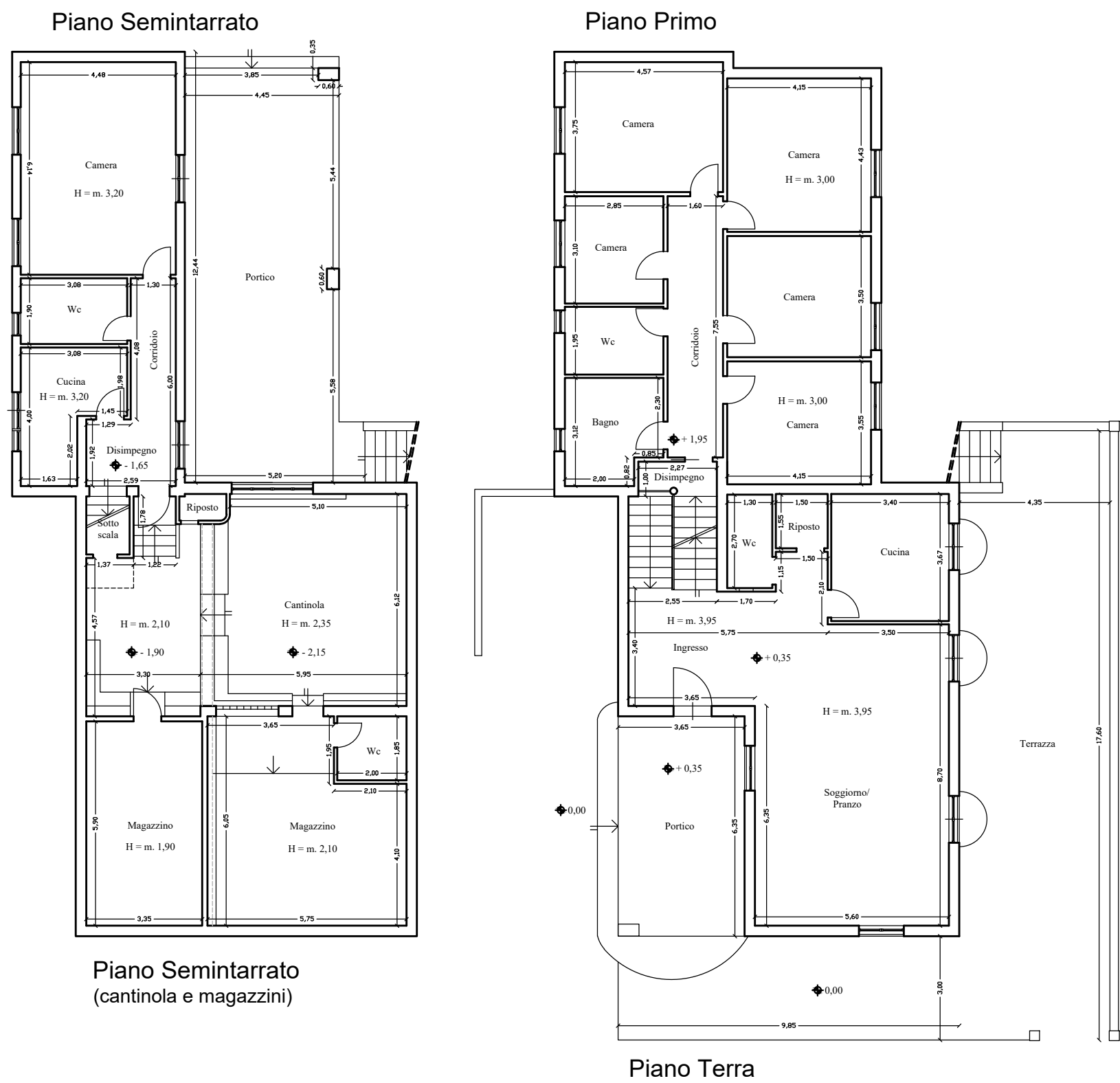


Superficie utile netta non abitabile = mq. 110,40
 Superficie lorda coperta = mq. 119,00





Quadro di unione delle planimetrie dei Piani Terra e Primo
e dei Piani Seminterrato e cantinato



ALL. 3



N=-5500

E=-1200

1 Particella: 201

9-Feb-2022 18:49:12
Prot. n. T408146/2022
Scala originale: 1:2000
Dimensione cornice: 534.000 x 378.000 metri
Comune: TERRASINI
Foglio: 16